

Department of Engineering/Road Management
Dan Gaillet, P.E., County Engineer/ Road Manager

3137 South Liberty Street, Canton, MS 39046
Office (601) 855-5670 FAX (601) 859-5857

MEMORANDUM

July 13, 2017

To: Sheila Jones, Supervisor, District I
Trey Baxter, Supervisor, District II
Gerald Steen, Supervisor, District III
David Bishop, Supervisor, District IV
Paul Griffin, Supervisor, District V

From: Dan Gaillet, P.E.
County Engineer and Road Manager *DH*

Re: Flood Study
Greystone Drive

Due to a failed stormwater drainage system on Greystone Drive, it is the recommendation of the Engineering Department to hire Mendrop Engineering Resources, LLC to evaluate and make improvement recommendations to the County for a fee not to exceed \$11,645.

**WORK ASSIGNMENT NO. 15
DRAINAGE INVESTIGATION AND RECOMENDATIONS
ALONG GREYSTONE DRIVE BETWEEN HIGHWAY 463 & GREYSTONE CT.
MADISON COUNTY**

THIS WORK ASSIGNMENT TO THAT CERTAIN GENERAL ENGINEERING SERVICES CONTRACT IS EXECUTED BY AND BETWEEN MADISON COUNTY BOARD OF SUPERVISORS AND **MENDROP ENGINEERING RESOURCES, LLC**, EFFECTIVE THE 12TH DAY OF JULY, 2017, IS INCORPORATED THEREIN AS IF COPIED FULLY IN BOTH WORDS AND FIGURES AS A PART OF EXHIBIT NO. 1.

LET IT BE KNOWN THAT:

WHEREAS, the parties to the above stated CONTRACT are now desirous of implementing an additional Work Assignment or phase thereunder: and,

WHEREAS, each of said parties represents that it continues to have authority to execute this Work Assignment and that all certifications previously made in said CONTRACT remain in effect;

NOW THEREFORE, the parties hereto do further contract and agree to add the following items of work to the above CONTRACT under the additional terms and conditions as are hereinafter stated:

SPECIFIC SCOPE OF WORK FOR THIS WORK ASSIGNMENT

The CONSULTANT, in accordance with the General Services Agreement, shall (1) complete drainage investigation and surveys along Greystone Drive between Highway 463 and Greystone Ct (2) evaluate the history of the watershed and review drainage patterns within the area of concern for the subject location, and (3) provide documentation of findings and recommendations.

The following engineering services shall be performed by the CONSULTANT on behalf of Madison County in accordance with the CONTRACT at the direction of the County Engineer or his designee, unless otherwise modified by the Madison County Board of Supervisors (MCBOS).

The Scope of Work shall include the following:

FIELD SURVEY, FIELD RECONNAISSANCE AND DRAINAGE RECCOMENDATIONS

The CONSULTANT shall, perform field survey of drainage structures, topographic data, finished floor elevations, and review high water elevations, if available, within the area of concern along Greystone Drive, Greystone Ct., and Highway 463 (Mannsdales Road). (Attachment 1)

A field reconnaissance will be performed to investigate the history of the drainage patterns and possible changes that would cause additional flooding of the area within the Greystone Drive area.

A review of the watershed will be performed to evaluate the existing hydrologic conditions, as well as document any hydrologic changes in the area, changes of flow volumes, flow paths, or patterns.

An analysis of the existing drainage structures along Greystone Drive will be performed to evaluate the existing hydraulic conditions and assess the documented overtopping of Greystone Ct. Up to a maximum of 2 alternatives will be assessed that could improve hydraulic conditions within the areas

of concern, more specifically the two driveway crossings (16 Greystone Drive and 12 Greystone Drive) and the intersection of Greystone Drive and Greystone Ct.

The CONSULTANT shall submit findings of the engineering investigations to MCBOS for review. Subsequent to MCBOS review, a meeting will be scheduled with a MCBOS representative to review and discuss the findings of the study. Subsequent to the review meeting, the CONSULTANT shall make all necessary changes which arise during the review prior to submitting final recommendations. All pertinent hydraulic data, documentation, and reports shall be included in the submittal.

MAXIMUM ALLOWABLE COST

The CONSULTANT'S fee for completion of this Work Assignment shall be **\$11,645**, which sum shall be paid incrementally each month. Services will be billed monthly on an hourly basis for cost incurred during the period, but shall not exceed the total estimated fee without prior written authorization from the Client.

SO EXECUTED AND AGREED THIS THE _____ DAY OF _____, 2017.

THE MADISON COUNTY BOARD OF SUPERVIORS

SO EXECUTED AND AGREED THIS THE _____ DAY OF _____, 2017.

MENDROP ENGINEERING RESOURCES, LLC

ATTEST: (affix seal)





Exhibit 1

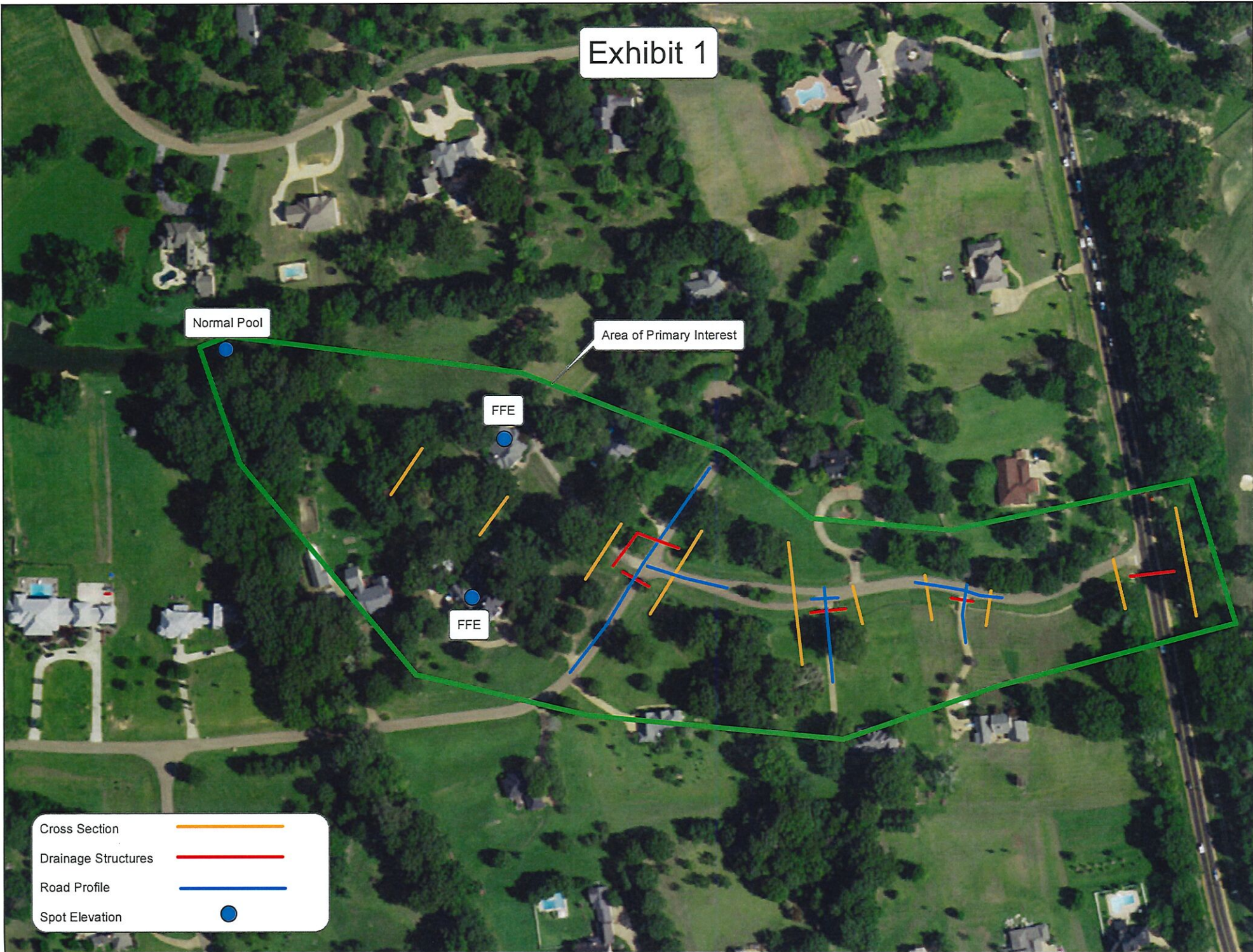
Normal Pool

Area of Primary Interest

FFE

FFE

Cross Section	
Drainage Structures	
Road Profile	
Spot Elevation	





ROAD

ENTER OFFICIAL RECORDS UNIT
NOV 19 10 10 AM '00